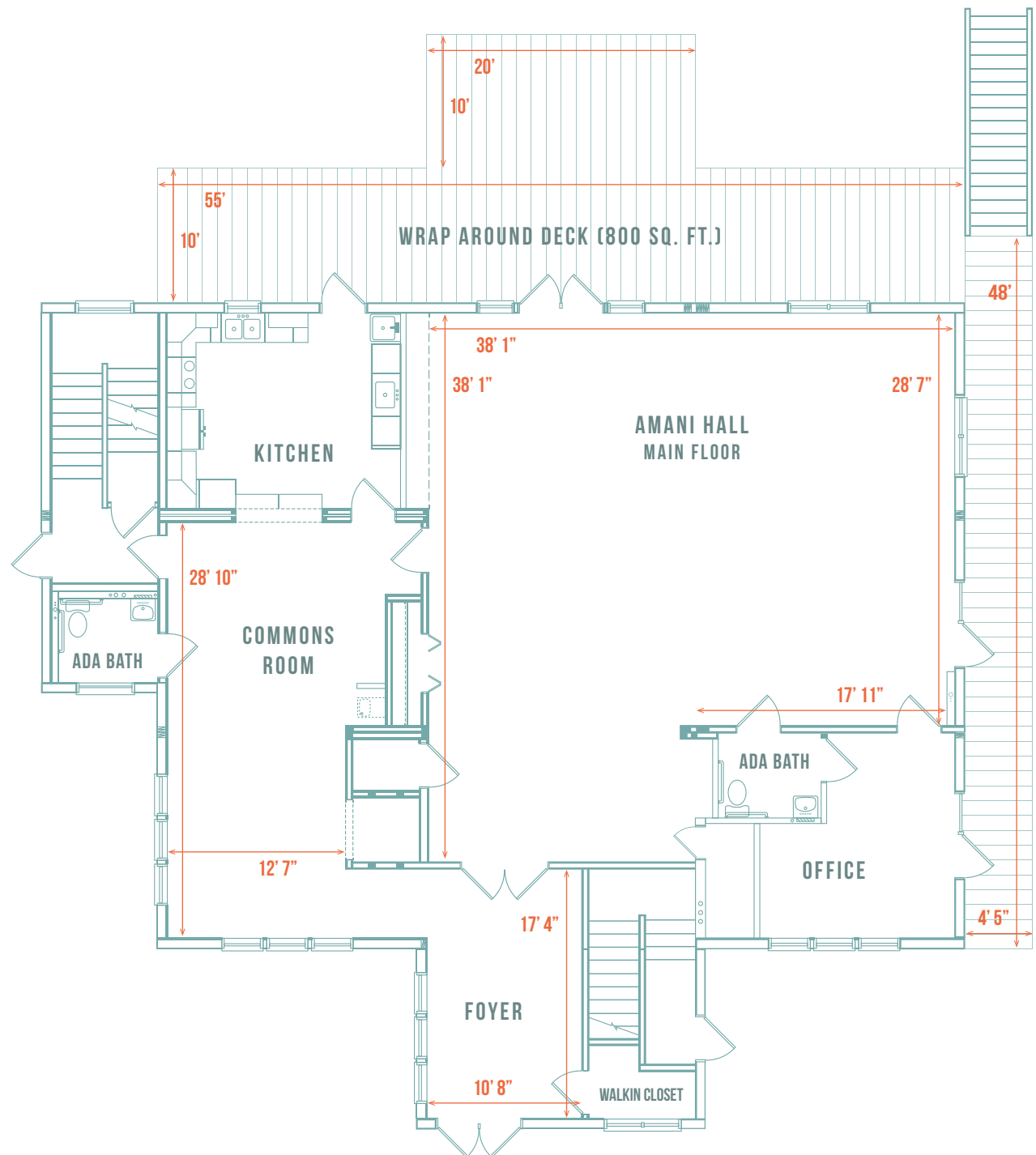


AMANI HALL

A sunny, 1,200 sq. ft. Grand Room with a 20 ft. high cathedral ceiling, wood floors, 130 chairs, 26 tables, an adjoining Commons Room (410 sq. ft.), 2 accessible restrooms, warming kitchen, and access to a wrap around deck (800 sq. ft.) overlooking the gardens. Main floor office with private entrance and space for one large desk and files.

- Main floor, 1200 sq. ft.
- 20 ft. high cathedral ceiling
- Connected Commons Room (480 sq. ft.)
- Full kitchen for warming and serving
- ADA compliant restrooms
- Deck overlooking gardens (800 sq. ft.)
- Portable chairs (130) and tables (26) to configure for your needs
- Capacity: 100





4216 Howard Road
Beltsville, MD 20705
Phone: 240.343.4216

GARDEN ROOM

Our lower level space is a bright, 1400 sq. ft. walkout basement with a stone patio (900 sq. ft.), gardens and includes a fully accessible bathroom, and a café room with microwave and small refrigerator.

- Lower level space, 1400 sq. ft.
- 10 ft. high ceiling
- Walk out stone patio (900 sq. ft., covered by deck, so rainproof) and gardens
- 2 ADA compliant restrooms
- Storage
- Capacity: 100

